

## **/// The optimum shredder** **for maximum throughput rates**



**For large  
quantities of  
recyclable material!**

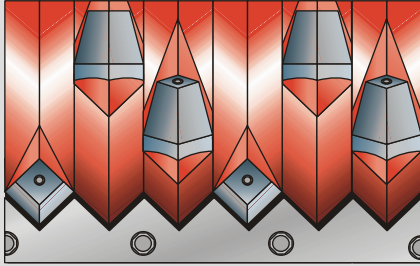


## **The WLK 10 – WLK 20 shredders** **reliable technology for all recyclable materials**

The slow-turning single-shaft shredders WLK 10 - WLK 20 are used in the plastic and recycling industry for shredding large quantities of rigid plastics, film, fibrous materials, textiles, paper, cardboard,

filaments, rubber and more! The basic models are built based on customer requirements such as throughput rate, rotor design and hopper design.

## WLK 10 - WLK 20 technology



### Patented V-rotor

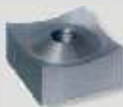
- Optimum material intake
- Minimum cutting knife wear
- Low power consumption yet high output
- Narrow cutting gap between rotor and counterknife (Super-Cut)
- Defined knife projection

The profiled V-rotor is manufactured in one piece and mounted by sturdy rotor bearings. Special knife holders are welded into milled knife pockets around its circumference. The cutting knives are inserted into these holders and screwed in place from behind. As a result, high-speed knife changing is possible because the design prevents the screw heads from being damaged during shredding. The concave cutting knives can be turned four times and guarantees a precise cut at a high throughput rate.

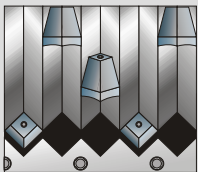
Various sizes available:

1.57" x 1.57" (40 x 40 mm)

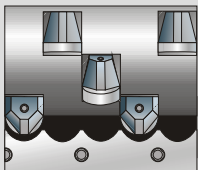
2.36" x 2.36" (60 x 60 mm)



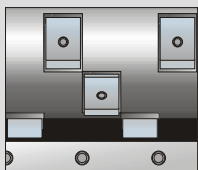
### Other rotor versions



Profiled rotor with cutting knives inserted in the recesses



Flat rotor with round or pot knives



Flat rotor with rectangular or square turnable knives

## The optimum shredder – for maximum throughput rates

### WLK10 – WLK 20

### For shredding maximum volumes

The WLK 10 - WLK 20 shredders are used in the plastic and recycling industries.

The rotor widths range from 39.4" (1,000 mm) to 118" (3,000 mm) depending on design. The machines are driven by electric or hydraulic motors with an output of

50 hp (37 kW) to 150 hp (110 kW) or a twin-drive up to 2 x 120 hp (90 kW).

The level of required drive output depends on the material to be shred, the number of shredding knives being used and the required throughput rate.



WLK 10 - WLK 20 shredders with single and twin-drive

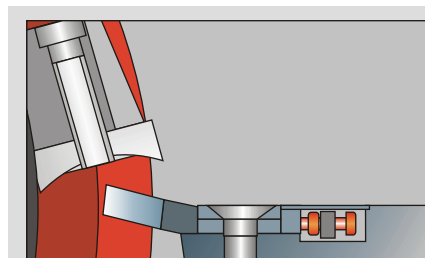


V-Rotor with welded knifeholders for universal use



V-Rotor with mounted/bolted knifeholders for abrasive materials

### Superior Cutting Action = "Super-Cut"



The counterknife is adjustable to ensure a precise cut and to avoid wrapping





## The optimum shredder – for maximum throughput rates

### WLK 10 – WLK 20

#### The WLK 10 - WLK 20 shredders in action

The material is fed through the hopper to a hydraulic ram which presses the material against the rotating rotor. The inserted material is shredded between the rotating knives and counterknives which are in place. The ram is fitted with

scraper rails which prevents any unwanted material from being pulled between the ram and the machine frame. The material can be transported out by a conveyor belt, discharge auger or pneumatic conveying system.



WLK 15 shredder loaded by forklift with gaylord



Pronged rail in the ram to avoid material spinning



Serrated Ram for thin material



WLK 15 Shredder and conveyor belt with magnetic shut-off switch



WLK 20 Shredder, loaded by front-loader

## WLK 10 - WLK 20 technology



Lift-up Screen for easy Access



Integrated Control Panel (plug & play)



Integrated Hydraulic System with cylinders mounted on universal joints



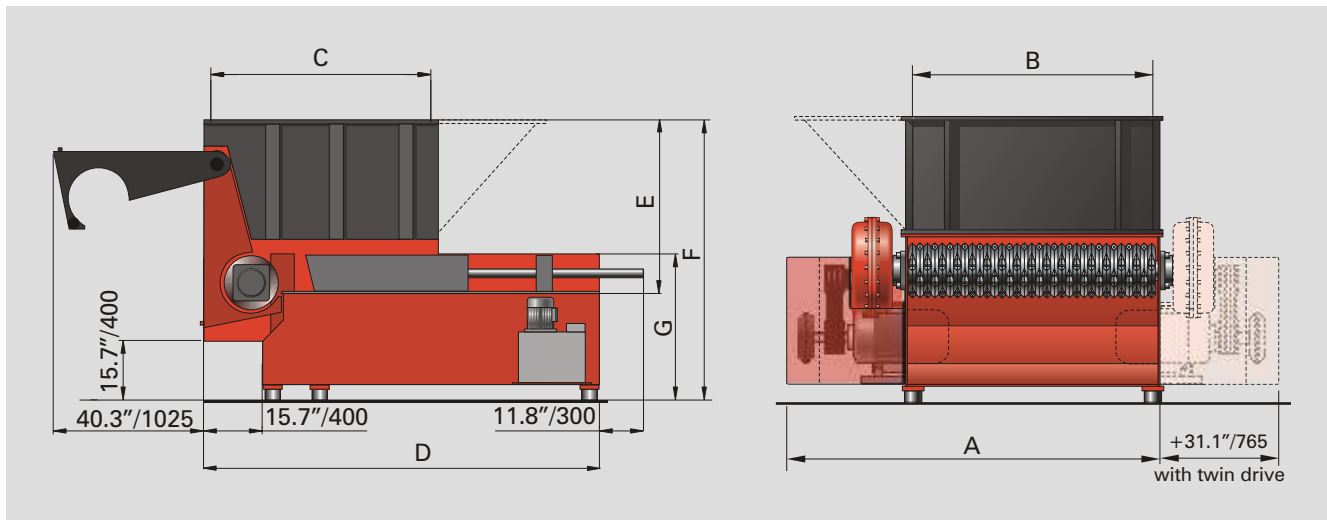
Gearbox Limit Switch works in conjunction with the Reverse Counter as tramp metal protection



High Quality Sealed Bearings. Pillow Block Bearings optional

## Technical Data

### WLK 10 – WLK 20



	WLK 10	WLK 12	WLK 13	WLK 14	WLK 15	WLK 18	WLK 20
Hopper opening (Inch):	39.4 x 47.2	47.2 x 47.2	51.2 x 47.2	59.1 x 47.2	59.1 x 59.1	70.9 x 59.1	78.7 x 59.1
(mm):	1,000x1,200	1,200x1,200	1,300x1,200	1,500x1,200	1,500x1,500	1,800x1,500	2,000x1,500
Hopper vol. (yd <sup>3</sup> /m <sup>3</sup> ):	1.7/1.3	2.0/1.5	2.1/1.5	2.5/1.9	3.0/2.3	3.7/2.8	3.9/3.0
Throughput (kg/h)	The throughput rate depends on material composition and screen size						
Rotor diameter (In./mm):	14.5/368	14.5/368	14.5/368	14.5/368	14.5/368	14.5/368	14.5/368
Rotor speed (rpm):	60 - 120	60 - 120	60 - 120	60 - 120	60 - 120	60 - 120	60 - 120
Power (hp):	50/60	60/75	60/75	75/100/120	75/100/120	75/100/120	100/120
(kW):	37/45	45/55	45/55	55/75/90	55/75/90	55/75/90	75/90
Tools (Pieces):	52	64	68	82	82	100	112
Screen size (Inch/mm):	3/8 - 4 / 10 - 100 (For all models)						
Connection-Ø (In./mm):	8/200	8/200	8/200	10/250	10/250	10/250	10/250
Weight approx. (lbs/kg):	7,700/3,500	8,800/4,000	9,900/4,500	11,000/5,000	12,300/5,600	16,000/7,300	17,900/8,100
Size A (Inch/mm)	70.9/1,800	78.7/2,000	82.7/2,100	90.6/2,300	90.6/2,300	102.4/2,600	118.1/3,000
Size B (Inch/mm)	39.4/1,000	47.2/1,200	51.2/1,300	59.1/1,500	59.1/1,500	70.9/1,800	78.7/2,000
Size C (Inch/mm)	47.2/1,200	47.2/1,200	47.2/1,200	47.2/1,200	59.1/1,500	59.1/1,500	59.1/1,500
Size D (Inch/mm)	82.7/2,100	82.7/2,100	82.7/2,100	82.7/2,100	106.3/2,700	106.3/2,700	106.3/2,700
Size E (Inch/mm)	45.6/1,160	45.6/1,160	45.6/1,160	45.6/1,160	45.6/1,160	45.6/1,160	45.6/1,160
Size F (Inch/mm)	74.0/1,880	74.0/1,880	74.0/1,880	74.0/1,880	74.0/1,880	81.1/2,060	81.1/2,060
Size G (Inch/mm)	39.1/995	39.1/995	39.1/995	39.1/995	39.1/995	46.2/1,175	46.2/1,175

Demonstrations and tests with your materials are possible in our facility by appointment.

**WEIMA America, Inc.**  
3678 Centre Circle  
Fort Mill, SC 29715 (USA)  
Phone: 803 - 802 - 7170  
Fax: 803 - 802 - 7098  
Internet: [www.weimaamerica.com](http://www.weimaamerica.com)  
E-mail: [info@weimaamerica.com](mailto:info@weimaamerica.com)



**With locations in**  
Ilsfeld, Germany  
Ternberg, Austria  
Northants, Great Britain  
La Ferté s. Jouarre, France  
**and more than**  
**50 sales offices worldwide!**

**Advanced technology for size reduction**